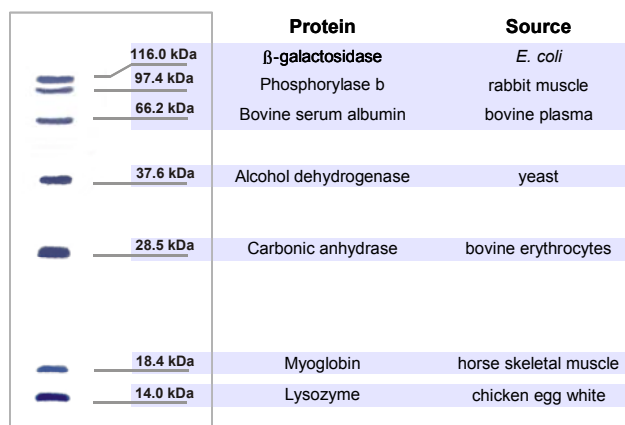


Protein Molecular Weight Marker

Cat.-No.	Amount
PS-101	0.5 ml

Liquid. Supplied in 50 mM Tris, pH 6.8, 100 mM DTT, 2% SDS, 0.1% bromophenol blue, 10% glycerol.

The Protein Molecular Weight Marker is a mixture of 7 purified proteins supplied in gel loading buffer for direct application to a SDS-polyacrylamide gel.



3 μ l loaded
on a
12% PAAG

For in vitro use only!

Purity: \geq 95% by SDS-PAGE.

Store: -20 °C